

POINT	NORTH	EAST	ELEV	DESCRIPTION
51	2237214.38	604077.33		5/8" RB
53	2236296.73	604175.60	20.51	2 1/2" BRASS CAP, TNH 40
54	2236641.37	603872.58		RB & PL. CAP LS7328
55	2236581.33	603873.13		RB & PL. CAP LS7328
56	2236694.83	603872.04		RB & AL. CAP INTEGRITY
58	2236693.98	603781.96		RB & AL. CAP INTEGRITY
59	2236762.99	603781.50		RB & PL. CAP LS7569
60	2236640.75	603832.55		RB & PL. CAP LS7328
61	2236580.62	603833.14		RB & PL. CAP LS7328
62	2236463.53	604091.50		3 1/4" AL. CAP, DOWL SH10 1994
63	2236764.54	603946.18		5/8" RB
64	2236893.24	603920.13		RB & AL. CAP INTEGRITY
65	2236891.84	603780.14		RB & AL. CAP INTEGRITY
67	2236437.80	604083.97		RB & PL. CAP LS7569
68	2237140.78	603777.89		RB & PL. CAP LS7569
69	2234792.12	603608.25	20.39	2 1/2" BRASS CAP, TNH 20
71	2236402.47	603813.42		RB & PL. CAP LS7569
72	2236402.91	603860.44		RB & PL. CAP LS7569
73	2236366.94	603860.79		RB & PL. CAP LS7569
74	2236346.75	603840.93		RB & PL. CAP LS7569
75	2236346.44	603814.01		RB & PL. CAP LS7569
115	2237188.50	604001.55	17.03	3 1/4" BRASS CAP, BM 5090E

POINT	DESC	NORTH	EAST	TOP ELEV	TOP OF NUT
501	VB	2236459.4	603866.9	18.1	10.9
503	VB	2236581.7	603885.4	18.3	11.7
512	VB	2237219.0	604073.8	20.6	7.9
513	VB	2237233.6	604156.6	22.1	16.5
515	VB	2236472.0	604488.7	20.8	15.5
527	VB	2237072.8	603464.3	19.2	N/A
528	VB	2237091.3	603570.9	19.2	13.6
531	VB	2237155.6	603834.2	18.7	N/A
533	VB	2236689.9	603884.2	17.8	11.7

N/A=TOP OF VALVE NOT ACCESSIBLE

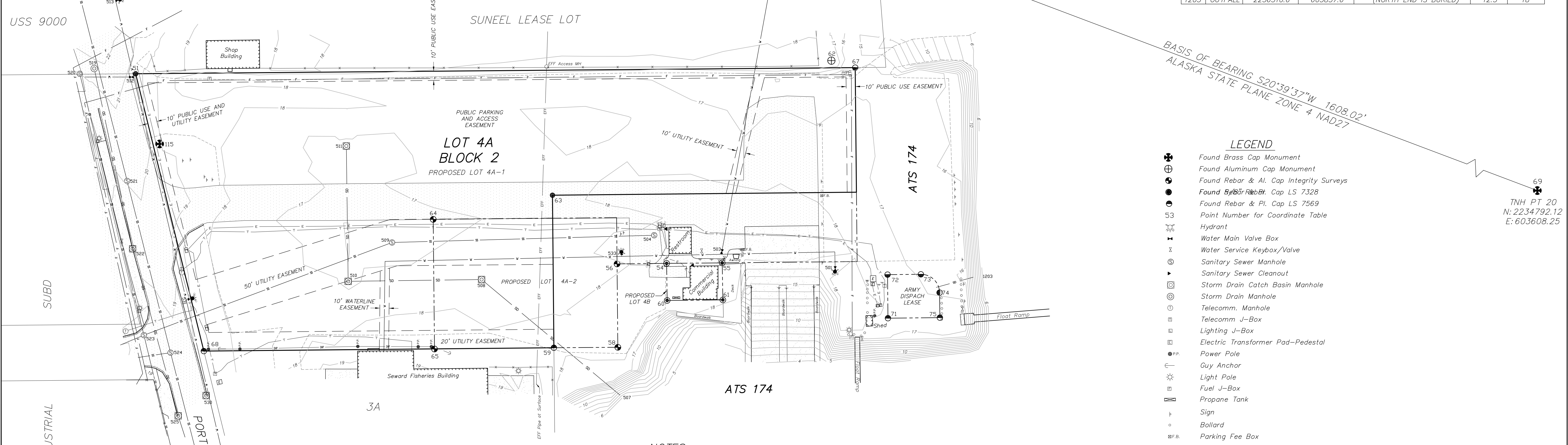
POINT	DESC	NORTH	EAST	TOP ELEV	BARREL	DIRECTION	INVERT	PIPE SIZE
504	SSMH	2236654.8	603903.0	18.1	4"	N	12.6	8"
						E	12.7	8"
						ESE	13.0	4"
						SSE	13.0	4"
						W	12.7	8"
509	SSMH	2236937.7	603895.1	16.8	4"	NW	11.5	8"
						S	11.7	8"
518	SSMH	2237322.2	604347.4	25.5	4"	W	7.3	10"
520	SSMH	2237274.7	604077.3	20.8	4"	W	11.2	16"
521	SSMH	2237223.5	603961.6	20.0	4"	E	8.6	10"
						W	8.7	10"
523	SSMH	2237205.4	603795.1	18.7	4"	N	10.2	8"
						S	10.2	8"
						W	10.1	16"
524	SSMH	2237176.7	603776.2	18.5	4"	N	9.2	8"
						E	8.9	10"
						W	9.0	10"
526	SSMH	2237124.7	603573.9	18.9	4"	E	9.7	10"
551	SSMH	2237134.3	603499.6	19.0	4"	E	9.5	16"

POINT	DESC	NORTH	EAST	TOP ELEV	BARREL	DIRECTION	INVERT	PIPE SIZE
508	CBMH	2236841.0	603855.1	17.0	4"	N	11.4	24"
510	CBMH	2236985.0	603853.2	16.1	6"	SW	11.4	24"
						E	12.1	24"
						S	12.1	24"
511	CBMH	2236987.0	603999.3	16.5	4"	W	12.6	24"
519	SDMH	2237259.1	604083.0	21.7	4"	W	10.7	24"
522	CBMH	2237217.6	603888.4	19.6 TBC	6"	E	11.1	24"
				19.1 INLET		W	11.1	24"
525	CBMH	2237168.4	603708.0	18.3 TBC	4"	E	11.9	24"
				18.1 INLET		S	14.0	18"
530	SDCB	2237138.3	603729.9	18.9 TBC	4"	N	14.8	18"
				18.3 INLET				
507	OUTFALL	2236691.8	603730.4				10.7	24"
1203	OUTFALL	2236310.6	603857.6			(NORTH END IS BURIED)	12.3	18"

BASIS OF COORDINATES
TNH PT 40
N: 2236296.73
E: 604175.60

BASIS OF BEARING S20°39'37"W 1608.02'
ALASKA STATE PLANE ZONE 4 NAD27

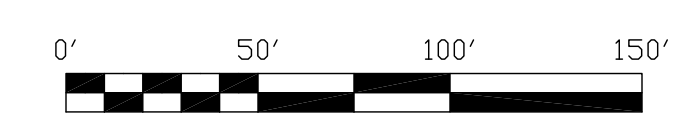
TNH PT 20
N: 2234792.12
E: 603608.25



- LEGEND**
- ⊕ Found Brass Cap Monument
 - ⊕ Found Aluminum Cap Monument
 - ⊕ Found Rebar & Al. Cap Integrity Surveys
 - ⊕ Found Rebar & Pl. Cap LS 7328
 - ⊕ Found Rebar & Pl. Cap LS 7569
 - 53 Point Number for Coordinate Table
 - Hydrant
 - Water Main Valve Box
 - Water Service Keybox/Valve
 - Sanitary Sewer Manhole
 - Sanitary Sewer Cleanout
 - Storm Drain Catch Basin Manhole
 - Storm Drain Manhole
 - Telecomm. Manhole
 - Telecomm J-Box
 - Lighting J-Box
 - Electric Transformer Pad-Pedestal
 - Power Pole
 - Guy Anchor
 - Light Pole
 - Fuel J-Box
 - Propane Tank
 - Sign
 - Bollard
 - Parking Fee Box
 - Pavement
 - Concrete
 - Platted Property Line
 - Proposed Property Line
 - Easement Line
 - Overhead Utility Line
 - Underground Electric Line
 - Underground Telecomm Line
 - Sanitary Sewer Line
 - Water Main Line
 - Fuel Line
 - Storm Drain Line
 - Seward Fisheries Effluent Line
 - Edge of Gravel Road/Pad
 - Fence
 - Concrete Curb and Gutter
 - Contour Line with Elevation

NOTES

- 1 VERTICAL DATUM IS MEAN LOWER LOW WATER (MLLW) PER N.O.A.A. TIDAL DATA FOR SEWARD, RESURRECTION BAY, ALASKA 945 5090, PUBLISHED 10/22/1984.
- 2 BASIS OF ELEVATIONS IS N.O.A.A. TIDAL BENCHMARK 5090E 1982, ELEVATION = 17.03' ABOVE MLLW.
- 3 BASIS OF BEARING AND BASIS OF COORDINATES ARE PER THE TRYCK NYMAN HAYES (TNH) DRAWING OF: SOUTH HARBOR FLOAT INSTALLATION AND UPLANDS IMPROVEMENTS, EXISTING SITE AND SURVEY CONTROL, SHEET G3, PROJECT NO. 03093.00, DATED 8/18/2006, ADDENDUM 1, 9/11/2006.
- 4 EXISTING PROPERTY LINES ARE PER PLAT 96-28, MARINA SUBDIVISION BLOCK 2 REPLAT.
- 5 PROPOSED PROPERTY LINES ARE PER THE PRELIMINARY PLAT OF MARINA SUBDIVISION-COAST GUARD REPLAT (KPB FILE NUMBER 2009-164), AND THE PRELIMINARY PLAT OF MARINA SUBDIVISION-SEWARD RESORT ADDITION (KPB FILE NO. 2007-032).
- 6 EASEMENTS SHOWN ARE FROM PLAT 96-28, ANY OTHER EXISTING EASEMENTS ARE NOT INCLUDED IN THIS SURVEY.
- 7 UNDERGROUND TELEPHONE AND ELECTRIC LINES ARE PER FIELD LOCATES PROVIDED BY SEWARD ELECTRIC AND TELALASKA. GCI REPORTED NO FACILITIES IN THE PROJECT AREA.
- 8 LOCATIONS SHOWN FOR UNDERGROUND WATERLINES, SANITARY SEWERS AND STORM DRAINS ARE PER SURFACE FEATURES AND INFORMATION PROVIDED BY THE SEWARD DEPARTMENT OF PUBLIC WORKS.
- 9 BARREL DIAMETERS AND PIPE SIZES FOR MANHOLES SHOWN HEREON ARE APPROXIMATE, THEY ARE BASED ON VISUAL INSPECTIONS FROM OUTSIDE OF THE MANHOLES.
- 10 FUELS LINES ARE PER AS-BUILTS PROVIDED BY SHORESIDE PETRO.
- 11 DATE OF FIELD SURVEY 07/21/2010.
- 12 CONTOUR INTERVAL IS ONE FOOT.



TOPOGRAPHIC SURVEY
LOT 4A BLOCK 2
MARINA SUBD, BLOCK 2 REPLAT
AND PORTIONS OF ATS 174
 Located within Sec. 3, T1S, R1W, S.M. AK.
 City of Seward
 Seward Recording District

CLINE AND ASSOCIATES
LAND SURVEYORS
 416 4th AVENUE PO BOX 2703 SEWARD, AK 99664
 (907) 224-7324 FAX (907) 224-6088

DATE: 07/27/10 SCALE: 1"=50'
 DRAWING NO: 10-27A F.D. BK.: 10-2